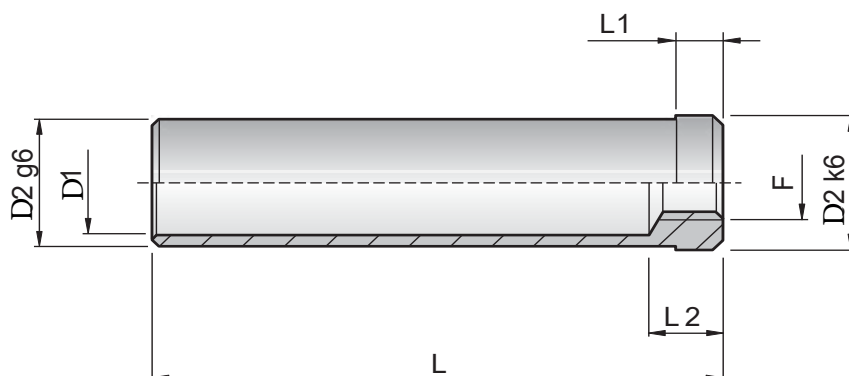




DOUILLE DE CENTRAGE

Matière: 1.7131 - Dureté: 61-63 HRC
Interchangeable avec E1160

REF: M1160 - D2 - L



D2	L	L1	L2	D1	F
20	30	6	14	16	M12
	40				
	50				
	60				
	80				
	100				
	120				
	140				
26	160	6	14	21	M12
	30				
	40				
	50				
	60				
	80				
	100				
	120				
30	140	6	14	25	M12
	160				
	180				
	40				
	50				
	60				
	80				
	100				
42	120	6	18	33	M12
	140				
	160				
	180				
	60				
	80				
	100				

D2	L	L1	L2	D1	F
42	200	6	18	33	M12
	220				
	240				
	280				
	320				
54	80	6	18	43	M12
	120				
	160				
	200				
	240				
	280				
	320				